

# Optimize connectivity to Microsoft public services with France-IX and Microsoft Azure Peering Service



## Cynthia Treger

Global Black Belt Azure Networking



## Baptiste Ohanes

Cloud Solution Architect

CTO Infra Customer Success Unit

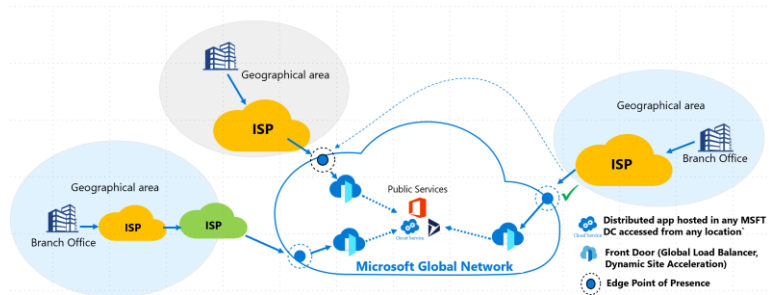


## Simon Muyal

France IX CTO

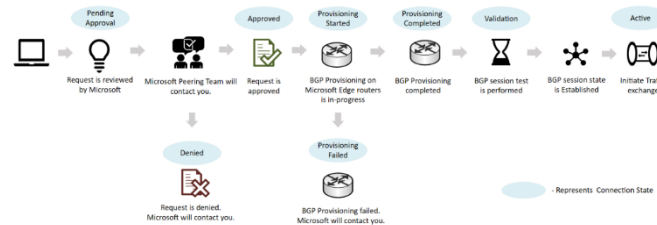
# How did I connect to Microsoft public clouds historically ?

## Public Internet (no peering)



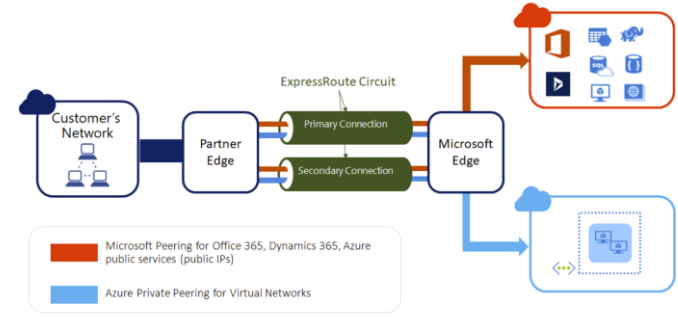
- Access to all public cloud services
- Connectivity via almost 200 Edge POPs
- Reachable via local ISP
- Best effort connectivity

## Internet Peering (Direct or IX)



- Direct connectivity with MS WAN
- No SLA
- Longer delay for peering
- Deprecated, limited to carrier or services providers

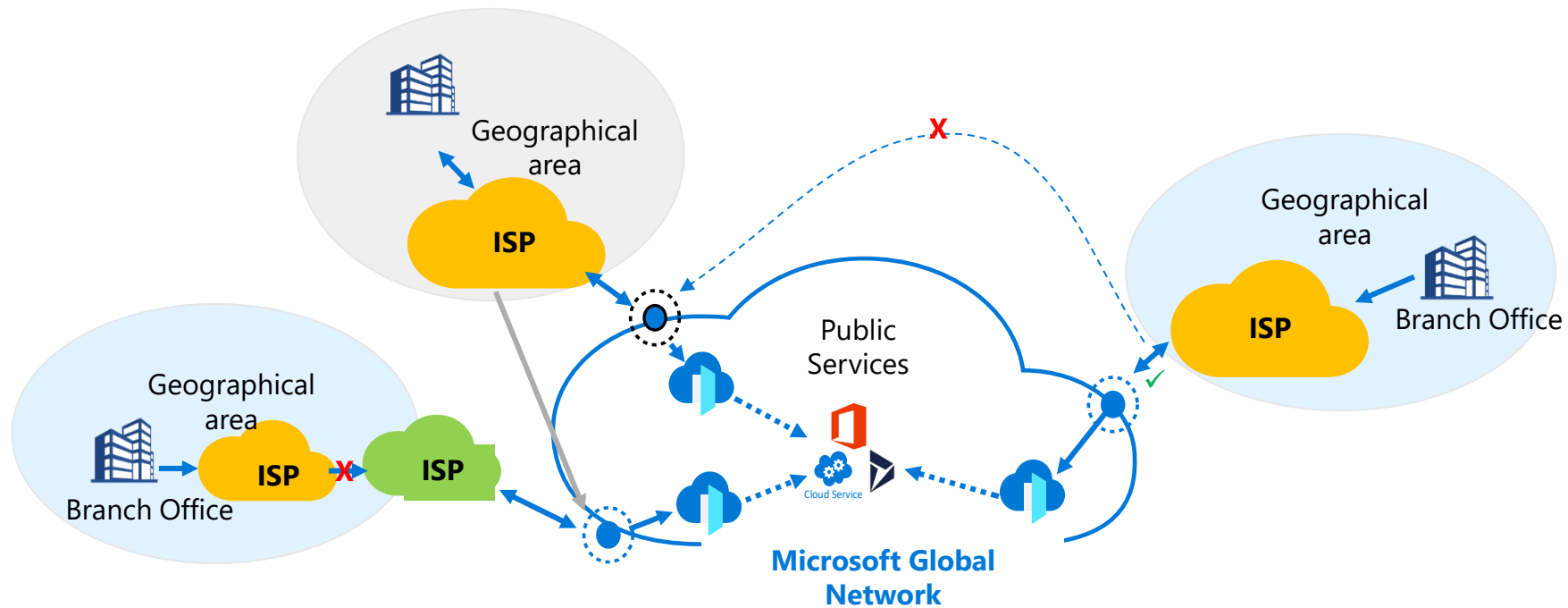
## Express Route MS peering



- Private connectivity
- Hybrid cloud solution
- Optimized for Azure but not for M365 and online software services
- Expensive solution

# Introducing Microsoft Azure Peering Service

- Platform to enhance connectivity to Microsoft public cloud services
- Partnership with Internet Service Providers (ISP) and Internet Exchanges (IXP)



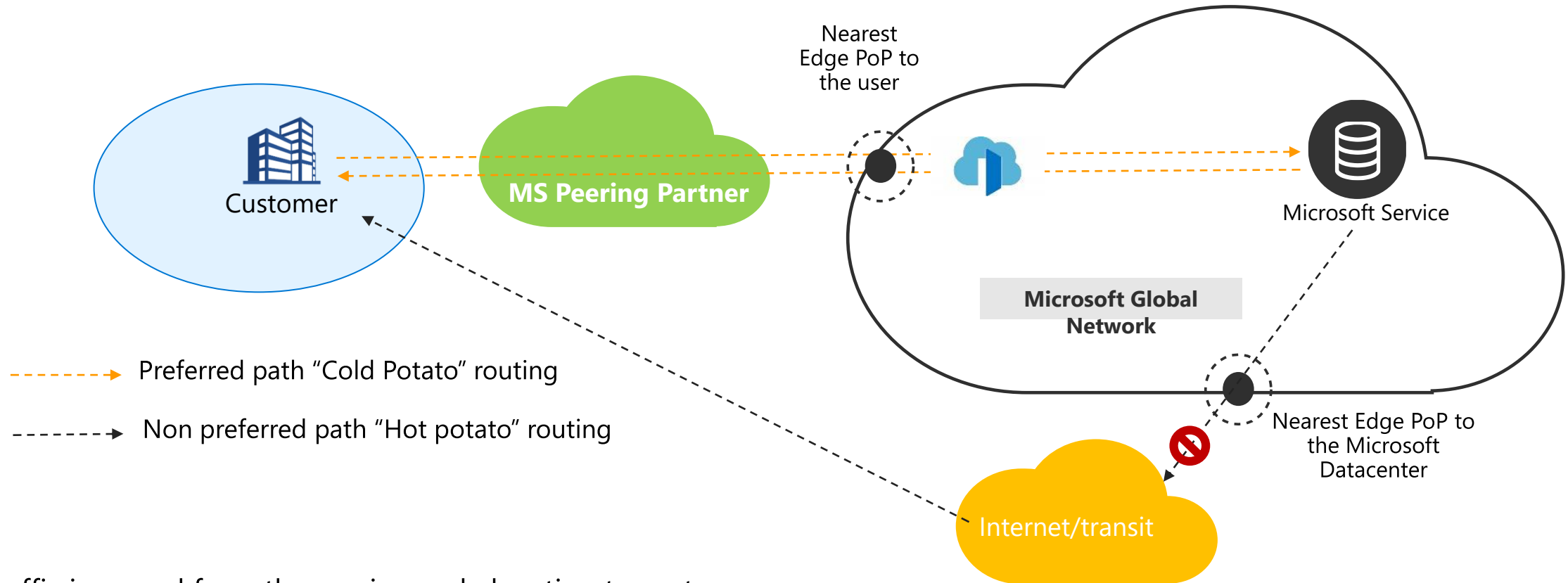
**High Reliability** - Local and geo redundant Interconnect between MS and Partner

**Lower Latency to MS services** – Connected to the nearest Microsoft PoP location

**Better Path** – One Network (ASN) hop for all MS public cloud services

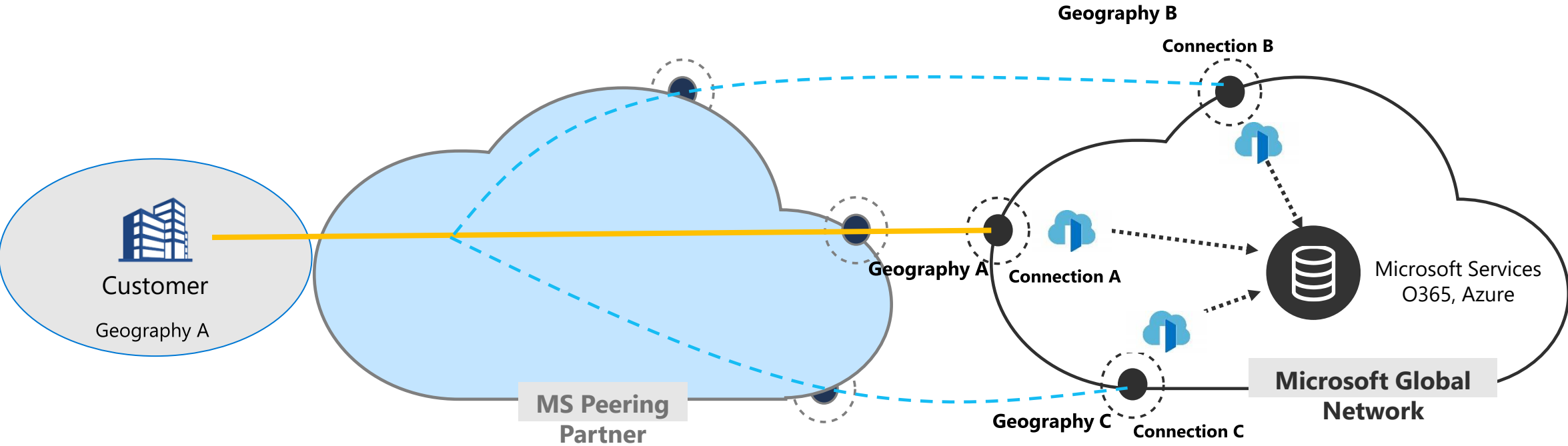
**Service Assurance** - SLA from Partner

# Optimized Path



- Traffic is served from the service node location to customer
- Microsoft will do cold potato and handover traffic to partner at the interconnect location preferred nearest to customer
- One network hop (ASN) – Traffic stays on Microsoft and Partner network
- No traffic for the customer is served out of other transit network/internet
- Smaller prefix size supported (</24)

# High Reliability – Local and Geo Redundancy



- Preferred shortest path
- - - Failover path to other locations (geo redundant Edge PoP)
- ● Connections

# Requirements to use MAPS

You need a public ASN

Public IPs are registered to your ASN

An Azure subscription to declare the service (no billing by Microsoft)

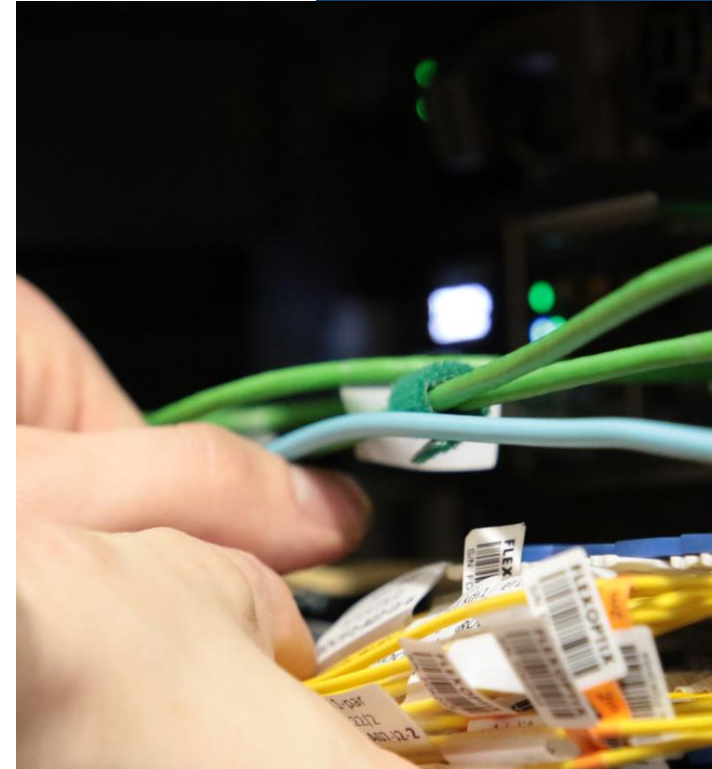
Check our documentation on partners and peering locations available today:

<https://learn.microsoft.com/en-us/azure/peering-service/about>

[Microsoft Azure Peering Service \(franceix.net\)](#)

# France-IX

Microsoft Azure Peering Service

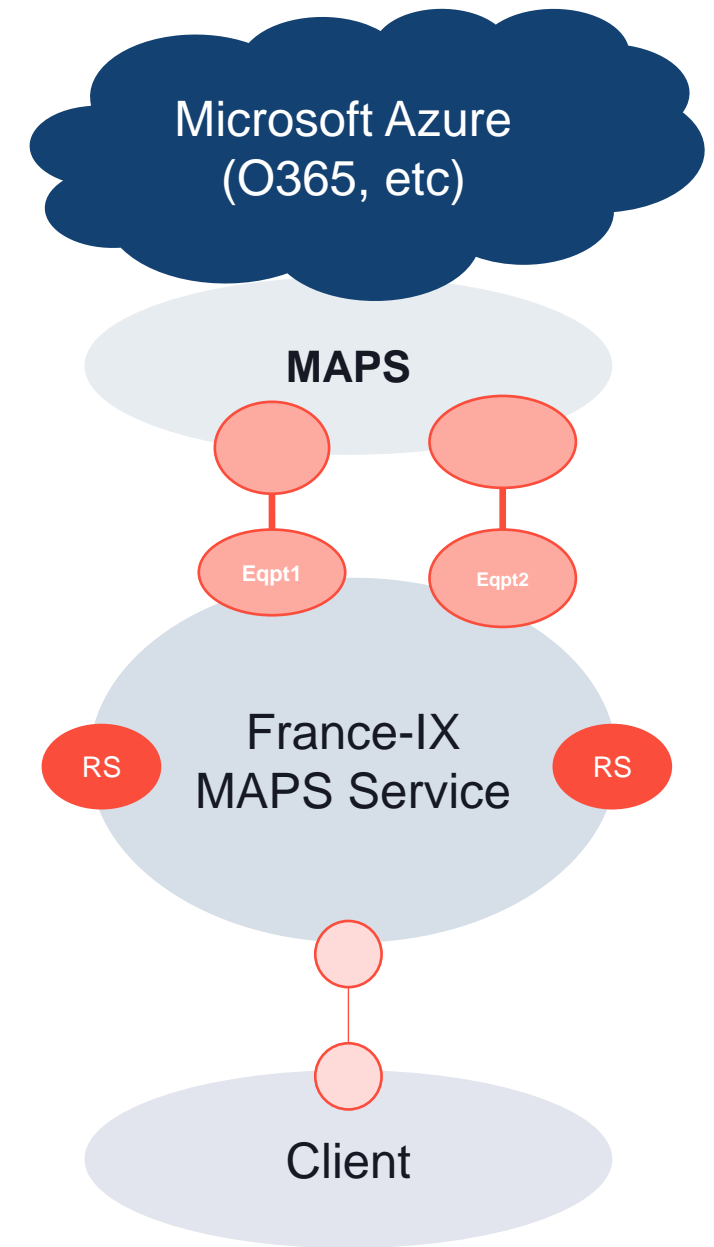


*franceix*  
www.franceix.net



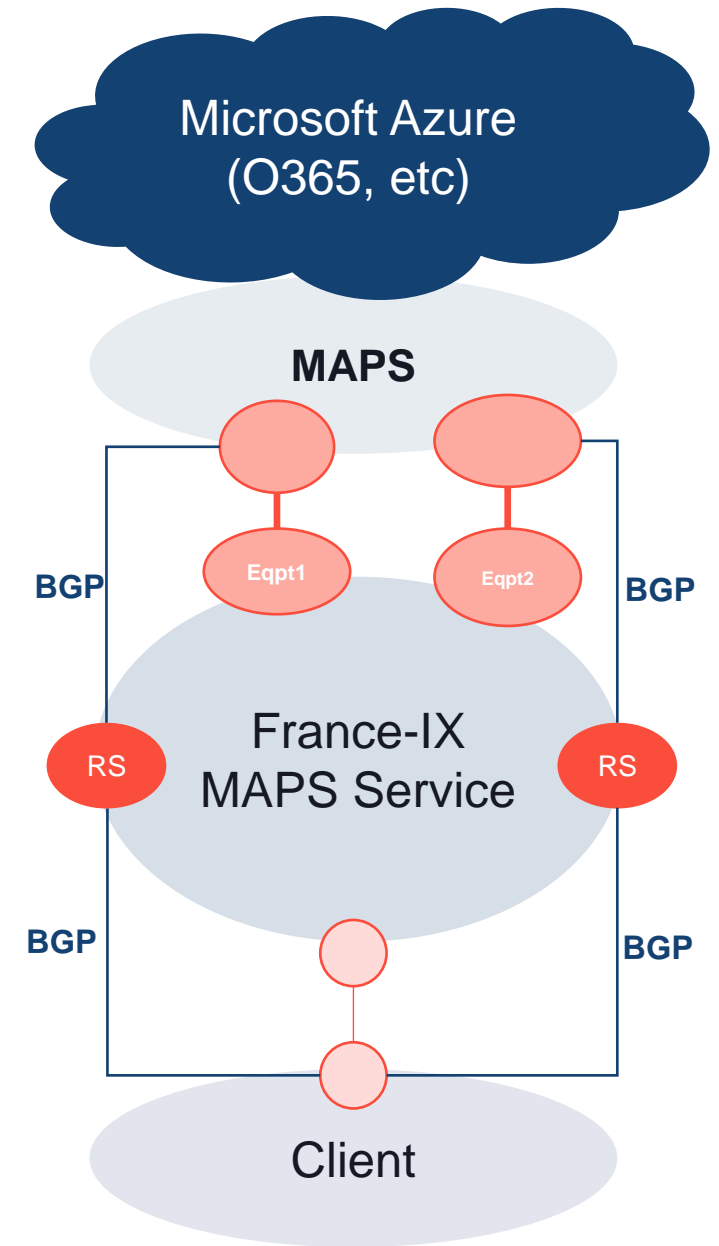
## MAPS: A dedicated infrastructure

- **Physical interconnection with Microsoft**
  - In Paris
  - 2 dedicated 100G ports (public peering ports and MAPS ports are not shared)
  - Redundant : 2 physical devices
  - Extension to [Marseille](#) planned to offer a Microsoft backup peering location
- **2 dedicated route servers (RS) for MAPS**
  - Well known and already used by peering community on Internet Exchanges (IXP)
  - Easy for customers to connect



## MAPS: The Route Servers (RS) - AS202010

- **Redundant BGP sessions**
  - With Microsoft
  - With customers
- **Security:** Customers cannot exchange traffic between them, **only with Microsoft, DDoS-Free platform**
- **Security: IRR and ROA filtering:** Customers can only advertise their prefixes (Aut-num or AS-SET object filtering)
- Ability to advertise more specific prefixes **than /24, up to /32**



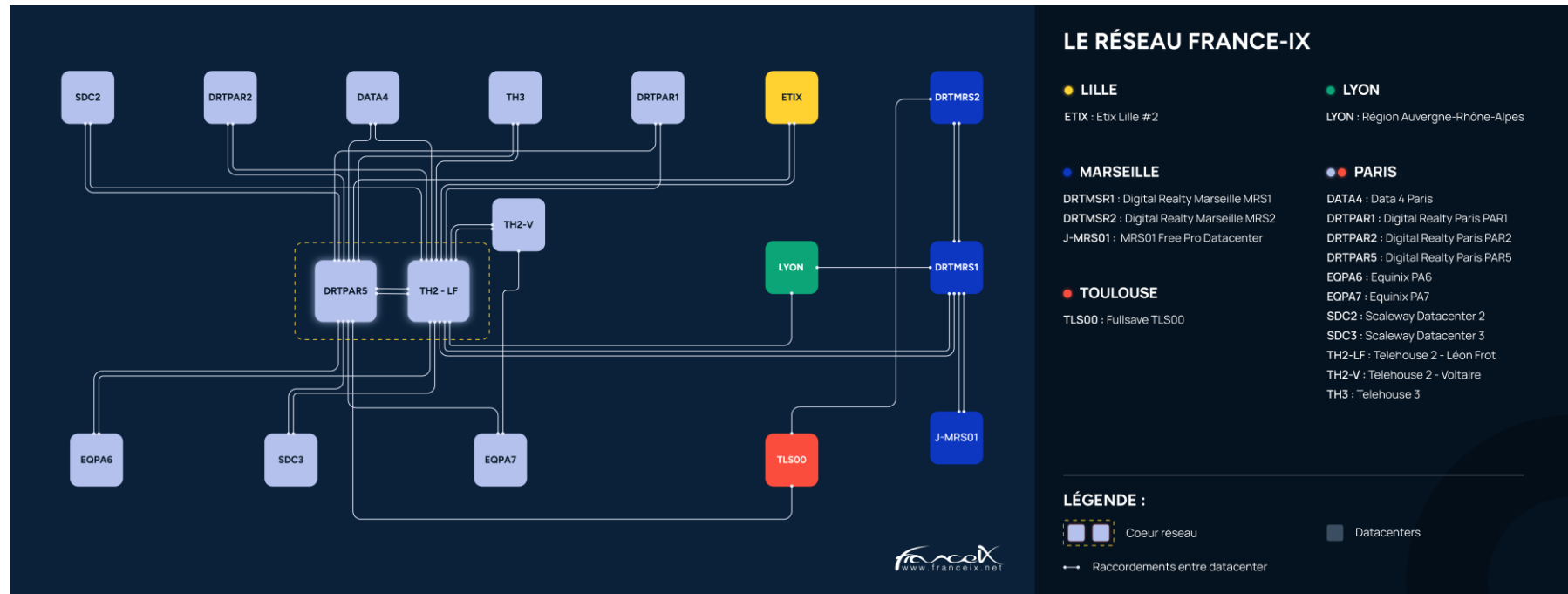
# MAPS: Accessible from anywhere

All France-IX PoPs (PAR, MRS, LILLE, LYON, TLS)

Use of redundant and transparent France-IX MPLS backbone to reach MAPS infrastructure

Two possible connections

- Use existing port (by adding a VLAN)
- Dedicated port for MAPS



# MAPS: SLA

Delivery in **10** working days  
*1st customer connected in less than 24 hours*

SLA: **99.98%** availability

**No rate-limiting** to allow peaks



---

# How to connect: Quick and easy

- **Requirements**
  - Public ASN and IP resources
  - Azure subscription
  
- **Process with France-IX**
  - *MSA (if new customer)*
  - *MAPS Special terms and conditions (SLA, ...)*
  - *Order form : **Bandwidth**, City/PoP, ASN, VLAN-ID*

[→ Sales@franceix.net](mailto:Sales@franceix.net)



**Thank You !!!**